

CNX

Water Management System



CNX Water Management System

CONTI CNX

The CNX product series – new, top-of-the-range, modular and electronic. Proven CONTI+ shower taps, as well as wash basin taps and urinal flush valves from the CONTI+ range, can all be linked to networks.

Intelligent technical building systems that can connect and control components of the drinking water installation are becoming ever more important.

The CNX controller enables the centralised control of up to 150 taps and devices within a range of up to 350 metres.

Via wireless operation, using the tablet included in the standard delivery, it is possible to change settings, call up status information, activate individual and group functions and access recorded data. Reports are saved in PDF format and can be printed and sent easily.

Wireless water management

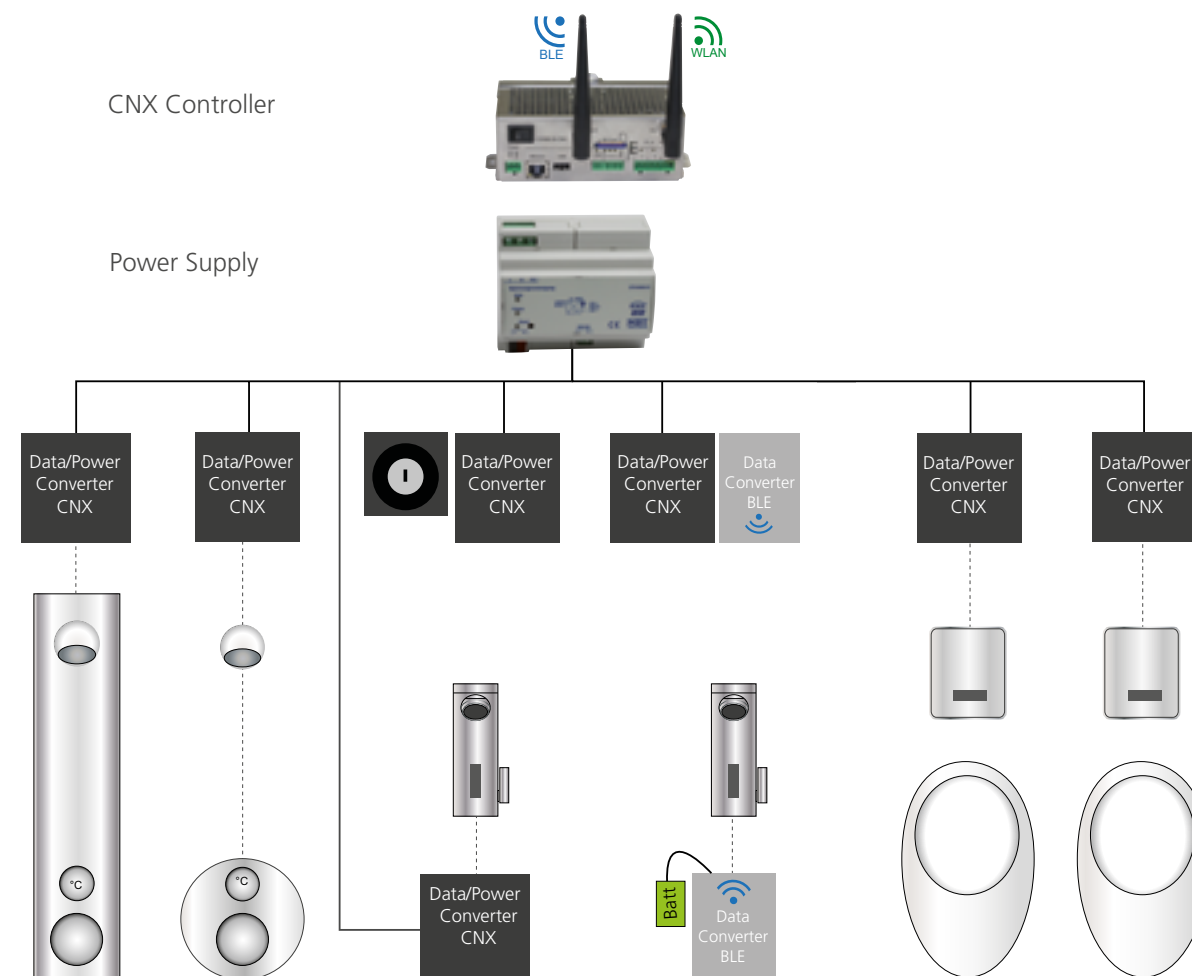
The web server integrated into the CNX controller provides a user friendly overview of all networked taps in the building. Taps that have been linked to the network can be located and controlled via a WLAN connected tablet or laptop, either individually or in groups. The tap operating status, forthcoming action and notifications are all clearly visible on the display.

When online, each tap receives updates automatically; when offline, updates can be implemented via tablet, for example. All internet-enabled devices can be operated via web browser, regardless of the operating system installed.

CNX Water Management System applications

Especially suitable for buildings that require drinking water installations offering high functionality and levels of hygiene, such as

- swimming pools
- schools and sports arenas
- army barracks
- hotels
- doctor's surgeries, hospitals, care and retirement homes
- drinking water installations in the commercial sector and administrative buildings
- sanitary facilities with specific non-standard operating requirements



Benefits of the CNX water management system:

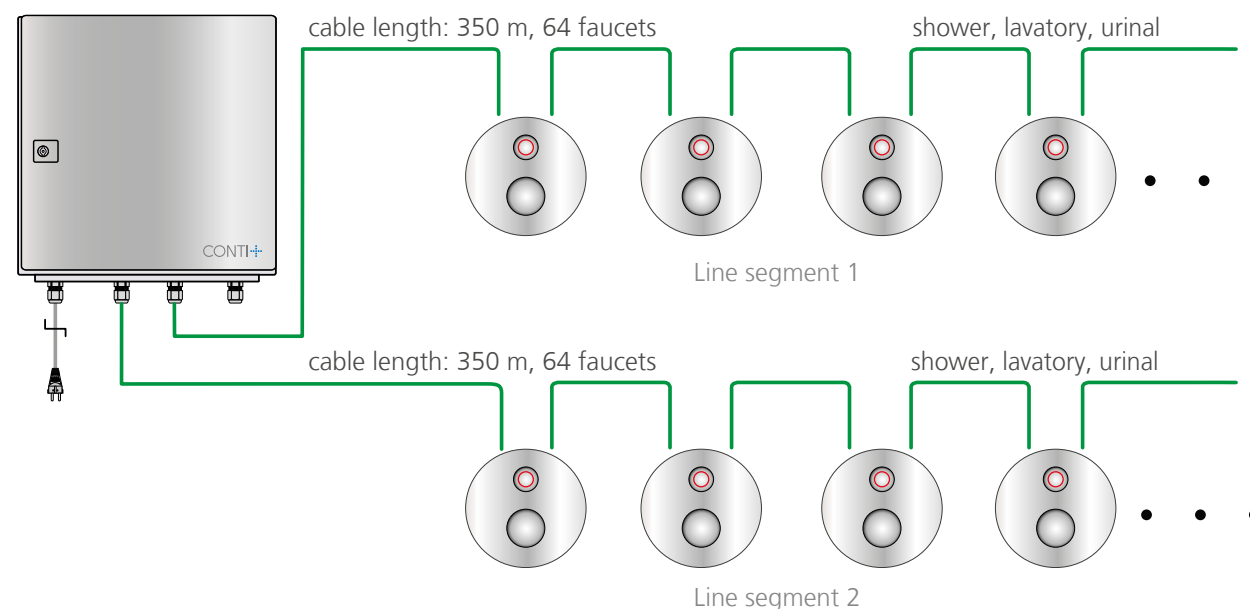
- One controller for up to 150 taps
- Integration of electronic taps from the CONTI+ range
- Generous network topology (up to 350 m)
- Electrical installation – low cost, in a linear, star or tree layout
- Based on stable KNX technology
- Tablet included with intuitive, straightforward user interface
- Data transferred via LAN, WLAN (BLE Bluetooth Low Energy in development)
- Lifecycle data storage
- Supports and ensures correct operation within the drinking water installation
- Reports in PDF format, saved to SD card
- Protected against short circuit and reverse polarity
- No loss of data in the event of a power cut
- Easy integration and installation tailored to individual requirements; user friendly to service

Simply, fast and secure



Topology

The topology offers easy straight-forward tap networking: individually in a linear, star or tree layout. Neither terminators nor special bus cables are required. The standard cables, piped in empty conduits or flush mounted, are quickly connected to the waterproof single-wire terminals. Additional shielding of cable is not required.



What is undoubtedly essential, however, is that the correct temperature, water replacement and flow rate are provided and maintained. These interacting parameters are regarded as the ones which have the most significant effect on the hygiene quality of drinking water at a microbiological level, according to generally accepted engineering standards (including EN 806, DIN 1988-n00 and VDI/DVGW 6023). The CNX system actively influences these parameters.

Automatic hygienic flushing

While hygiene is an important issue, centralised control is a must. The settings for flush duration, interval and water run-on time for every tap installed in the system can be set via a mobile device or PC thanks to the CNX system.



Thermal flushing

Safety is the buzzword for thermal flushing. As a result, the system only permits the thermal flushing procedure to be triggered at defined times that can be controlled via the tablet, in line with the technical standard DVGW Worksheet W 551. The complete process is monitored, recorded and can be printed.



Tap management

Devices can be added, reassigned within groups or moved thanks to a clearly structured menu. An overview of parameters set for each tap can be viewed on the tablet.



Technology meets Design

This maxim sums up the essence of CONTI+ sanitary solutions – pioneering products that break new ground in terms of form, materials, and technological development; environmentally friendly water saving products that not only enhance the comfort of users, but also benefit the environment; many years of experience systematically and continuously harnessed for the management of water savings in the sanitary sector.

We set ourselves very high standards. Attractive design, functional reliability, and easy operation and installation are essential requirements. It is no wonder that CONTI+ sanitary solutions lead the way in the electronic sanitary fittings and solutions segment.

A talent for innovation, extremely high quality standards, and a reliable instinct for the needs of the market make CONTI+ products trend setters with excellent customer benefits.

 Swiss Quality

Aquis Sanitär AG
Balgacherstrasse 17
CH-9445 Rebstein, Switzerland
phone +41-71-775 9500
fax +41-71-777-1641
info@aquis.ch
www.conti.plus

Fotos:
© CONTI
© Tiberius Gracchus